

Long Island Marine Science Association

April 25, 2008 Walk 7 P.M., Meeting, 8-10 P.M.

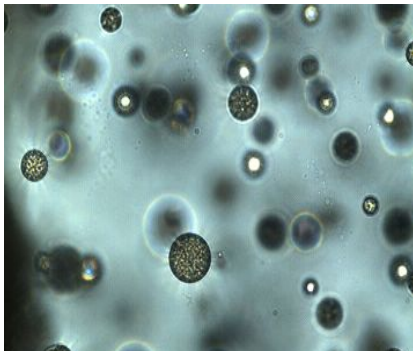
Summer Cottage - BOCES @ Caumsett State Park

**Come early for a short walk in mid-spring at Caumsett State Park,
Bring Binoculars.**

The QPX files: A hard clam disease story.



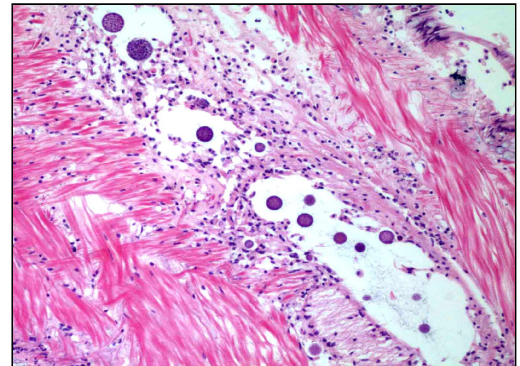
Featured Speaker: Soren Dahl,



**Marine Animal Disease Laboratory, School of
Marine and Atmospheric Sciences, Stony Brook
University.**

Changes in the marine environment are accompanied by a growing awareness of diseases that are affecting a wide range of marine animals, from whales to corals. Oysters along the Atlantic and Gulf coasts

have been significantly impacted by diseases. Most recently, Quahog Parasite Unknown (QPX) disease of hard clams is a concern for New York area waters and their related fisheries from Staten Island to Peconic Bay. A brief introduction to marine disease issues will be presented and efforts made through the Marine Animal Disease Lab to investigate QPX will be discussed.



Travel directions: The BOCES Center is a small white building just inside and south park entrance. Take your favorite parkway or expressway to Rout 110 north. Go north on 110 until Rt. 25A then left 3 blocks and make a right onto West Neck Road going north. Continue north on West Neck Road until you cross a narrow causeway and it becomes Lloyd Harbor Rd. The park entrance is a short distance further on the left. Once inside the park, proceed past and the first parking lot, make a **right** at the intersection, toward the **Summer Cottage**, then stay to the **left** at post 19 where there is a large "Park Exit" sign. Parking is just past the cottage to the left.

Refreshments and snacks will be served.

If have any questions, call Jim Browne at 516-784-9429 Or email ecojimb@gmail.com